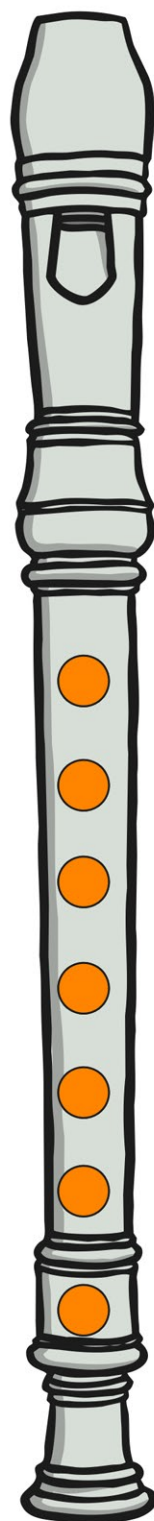
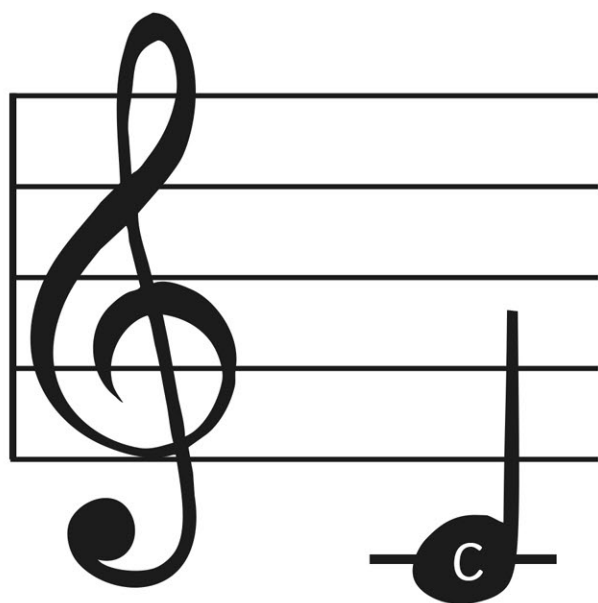


Fingering Chart for Recorders

C



T

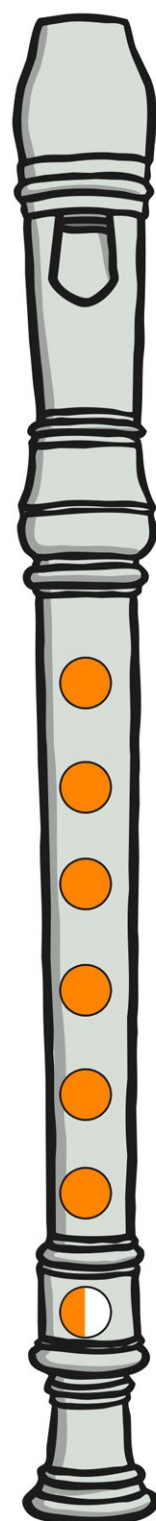
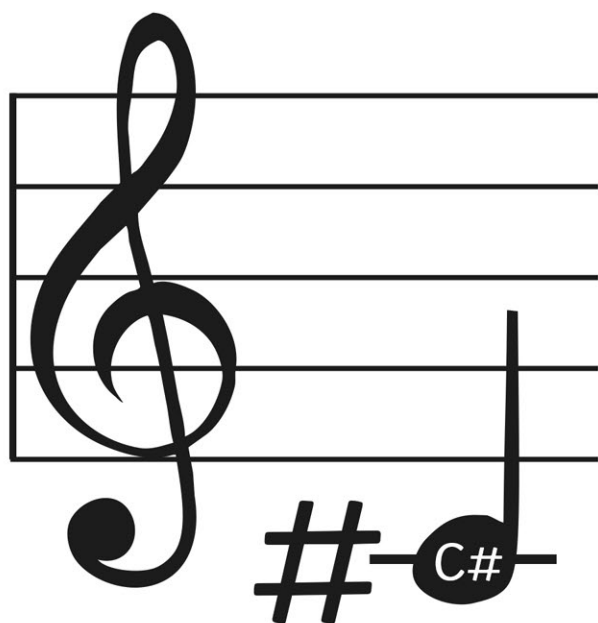
1
2 left hand
3

1
2 right hand
3
4

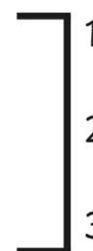
○ = open hole ● = closed hole ◐ = half open ◑ = a little open

Fingering Chart for Recorders

C#



T



1

2

3

left hand



1

2

3

4

right hand



= open hole



= closed hole



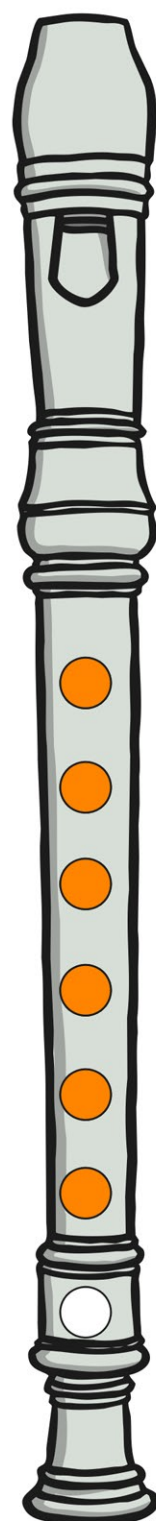
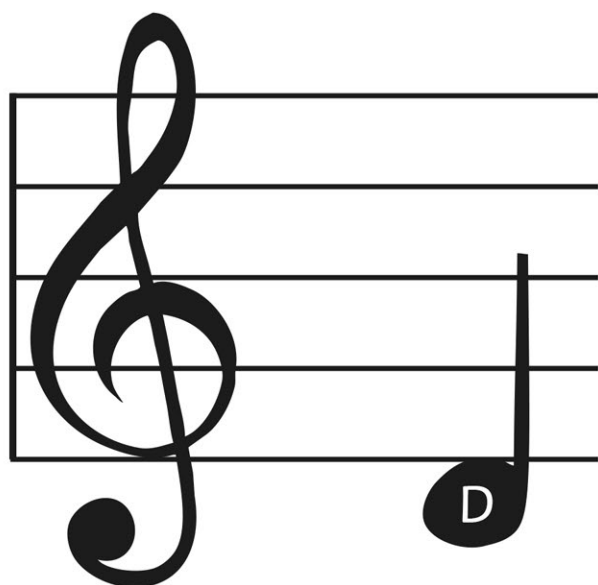
= half open



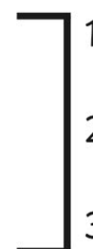
= a little open

Fingering Chart for Recorders

D



T



left hand



right hand



= open hole



= closed hole



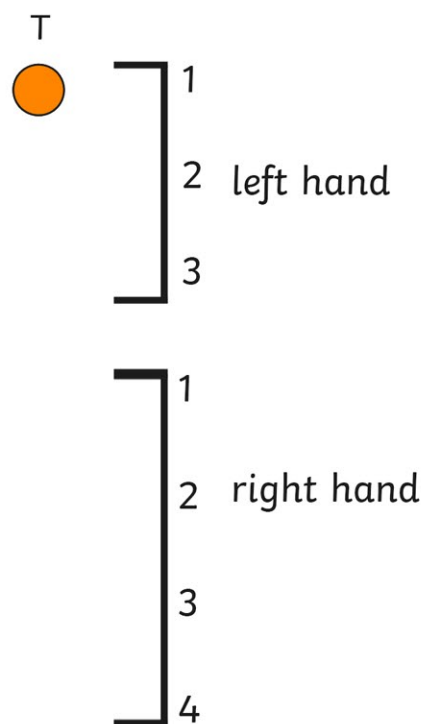
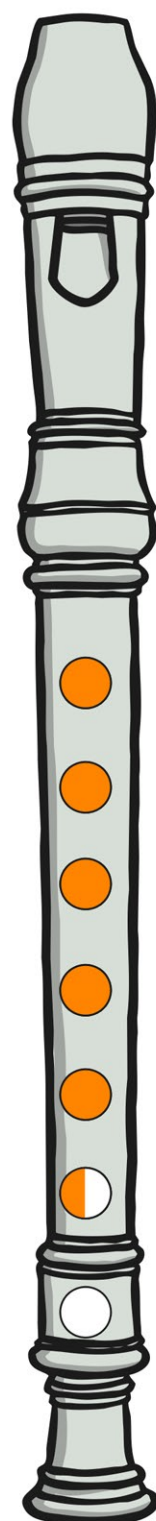
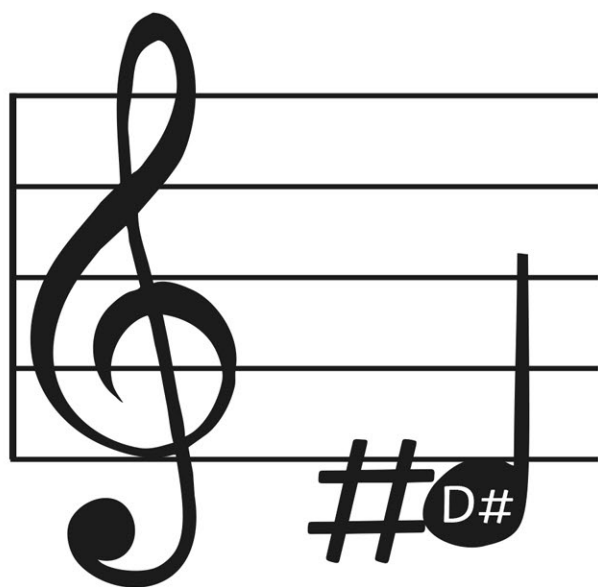
= half open



= a little open

Fingering Chart for Recorders

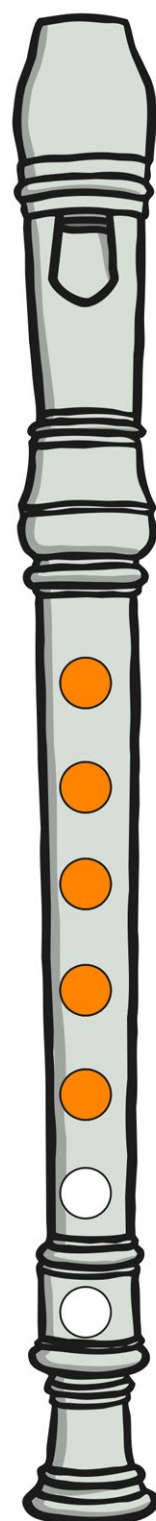
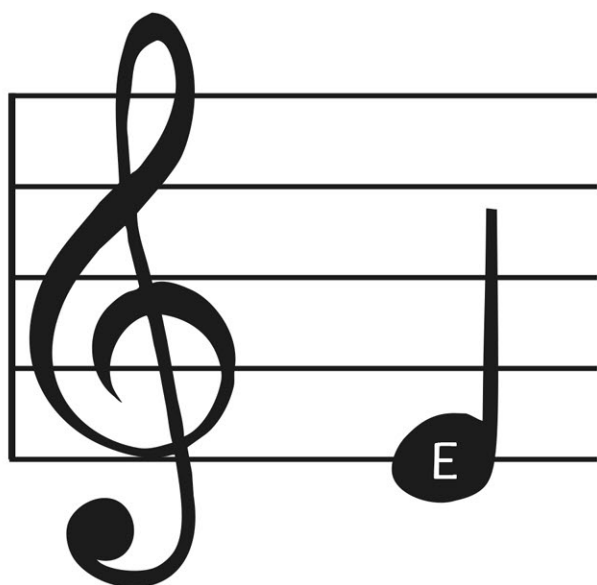
D#



○ = open hole ● = closed hole ◐ = half open ◑ = a little open

Fingering Chart for Recorders

E



T

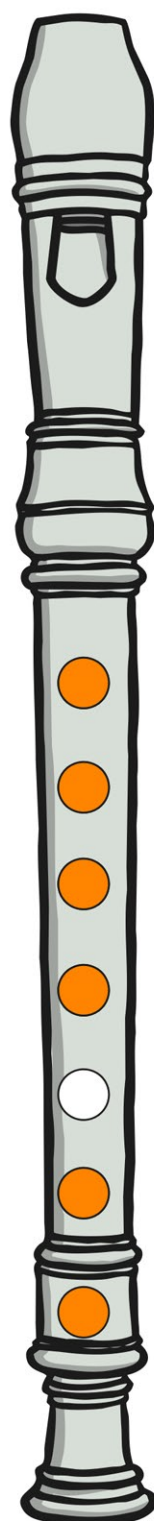
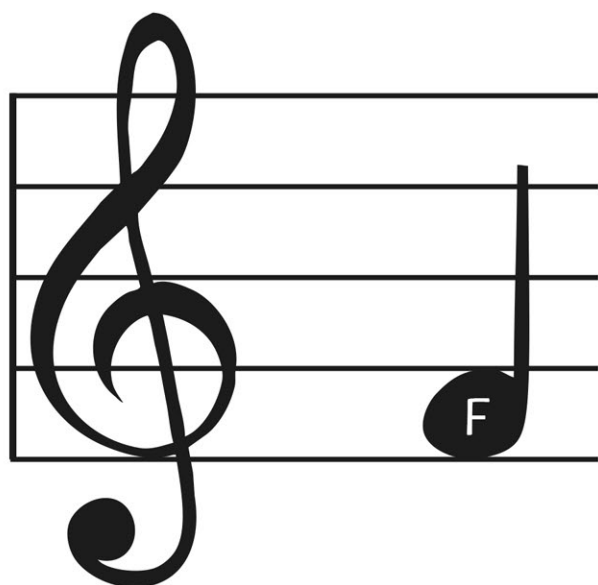
1
2 left hand
3

1
2 right hand
3
4

○ = open hole ● = closed hole ◐ = half open ◑ = a little open

Fingering Chart for Recorders

F



T

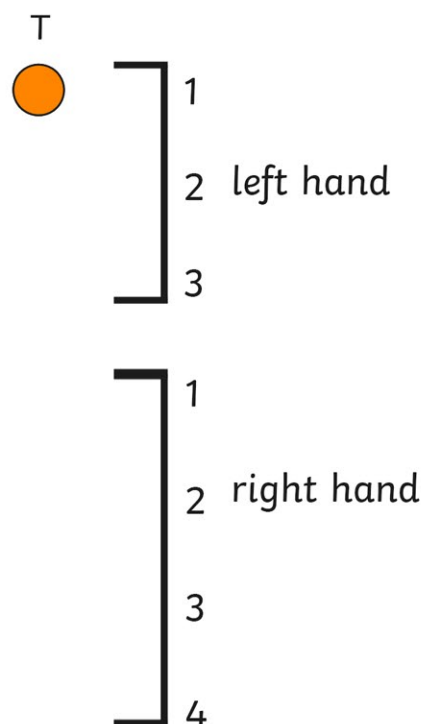
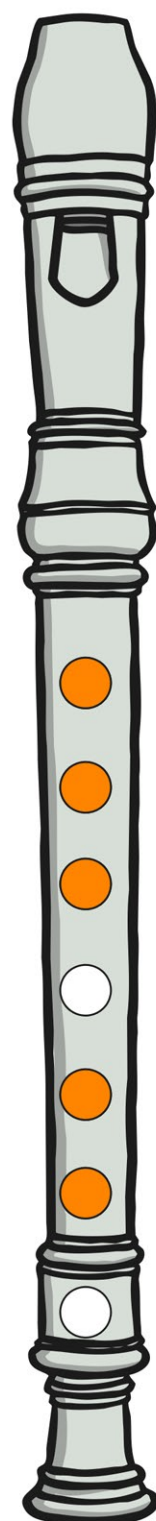
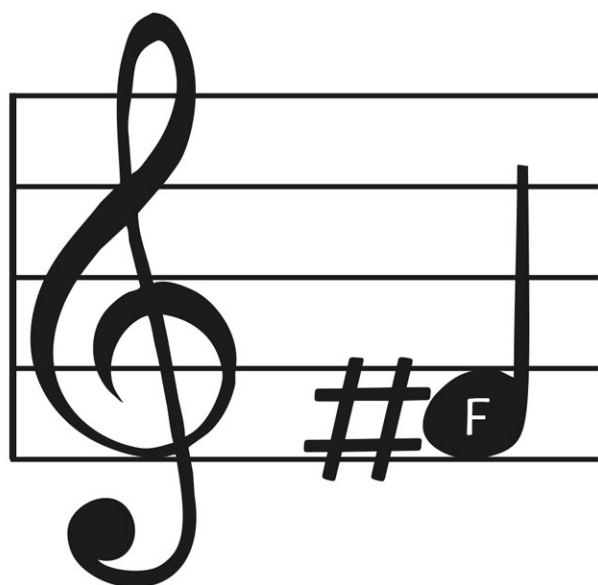
1
2 left hand
3

1
2 right hand
3
4

○ = open hole ● = closed hole ◐ = half open ◑ = a little open

Fingering Chart for Recorders

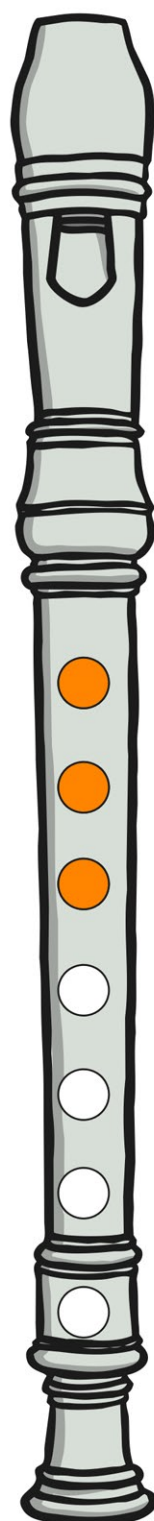
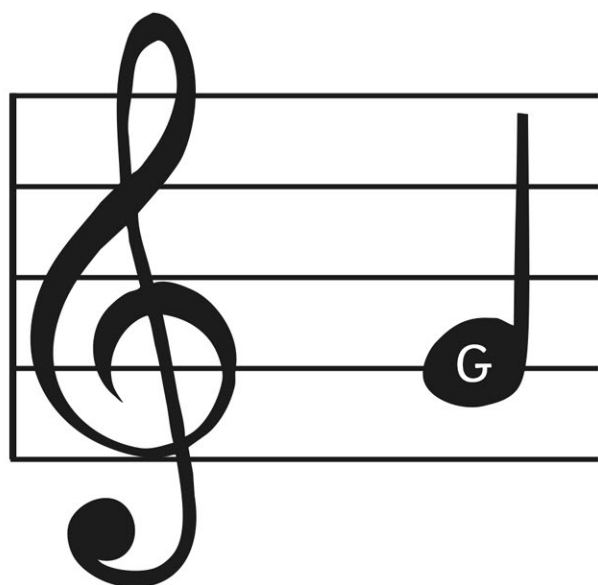
F#



○ = open hole ● = closed hole ◐ = half open ◑ = a little open

Fingering Chart for Recorders

G



T



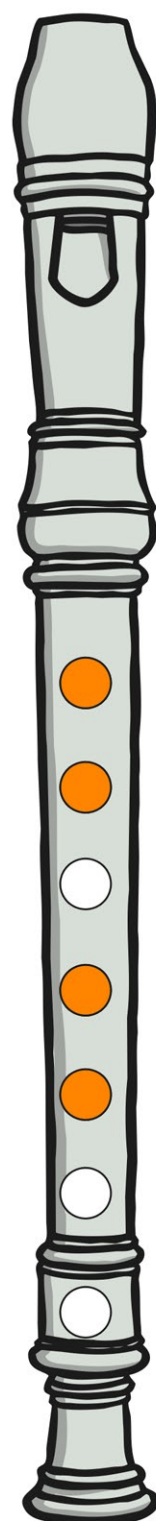
1
2 left hand
3

1
2 right hand
3
4

○ = open hole ● = closed hole ◐ = half open ◑ = a little open

Fingering Chart for Recorders

G#



T

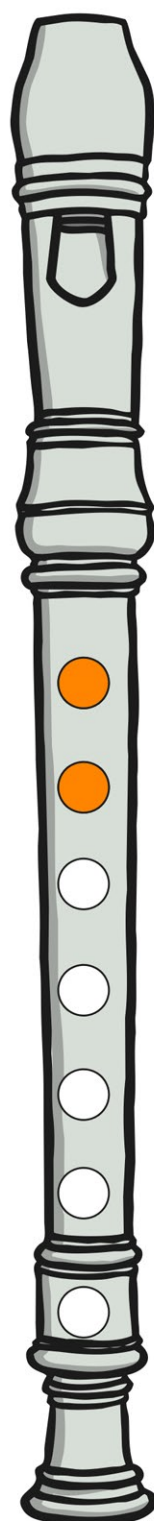
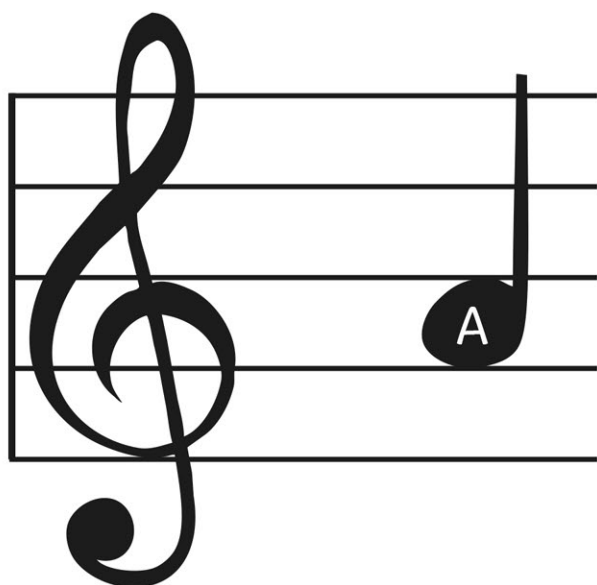
1
2 left hand
3

1
2 right hand
3
4

○ = open hole ● = closed hole ◐ = half open ◑ = a little open

Fingering Chart for Recorders

A



T

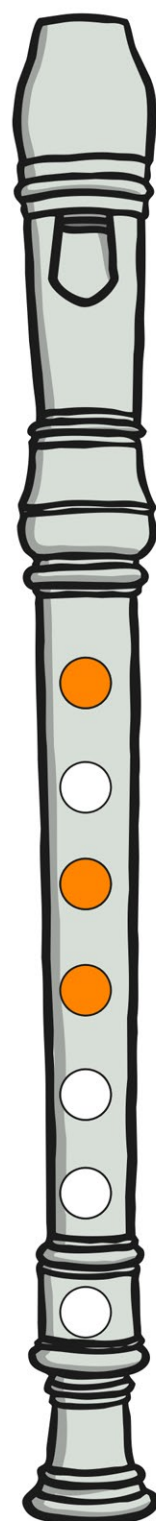
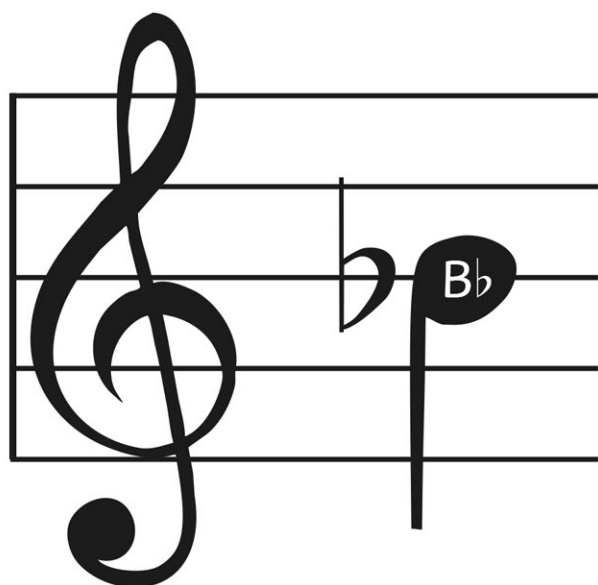
1
2 left hand
3

1
2 right hand
3
4

○ = open hole ● = closed hole ◐ = half open ◑ = a little open

Fingering Chart for Recorders

Bb



T

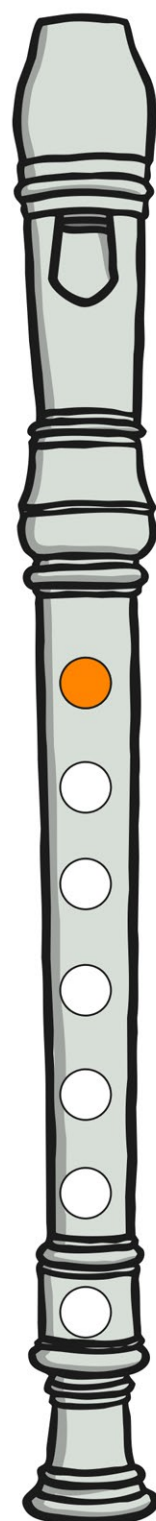
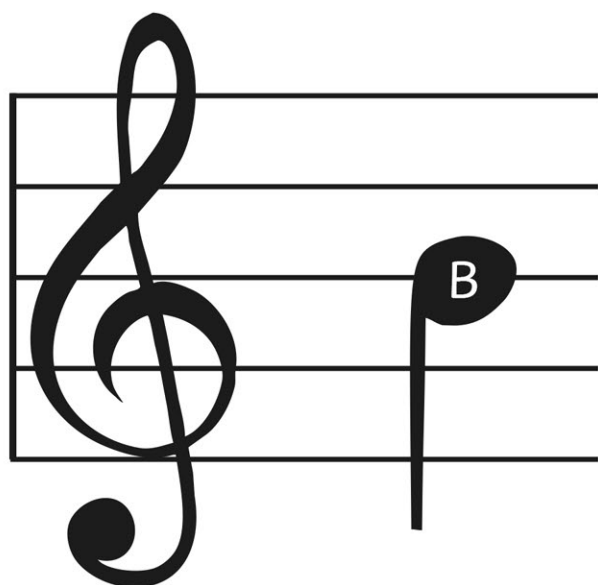
1
2 left hand
3

1
2 right hand
3
4

○ = open hole ● = closed hole ◐ = half open ◑ = a little open

Fingering Chart for Recorders

B



T

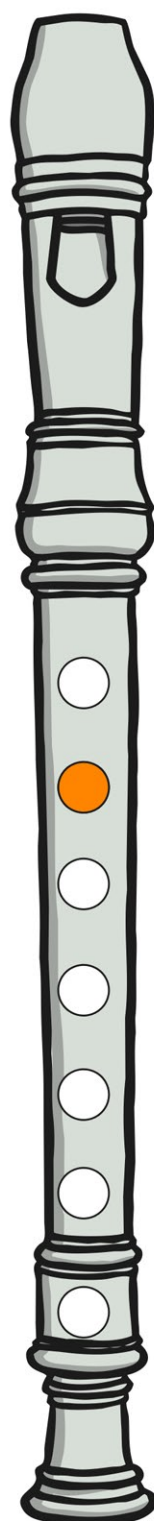
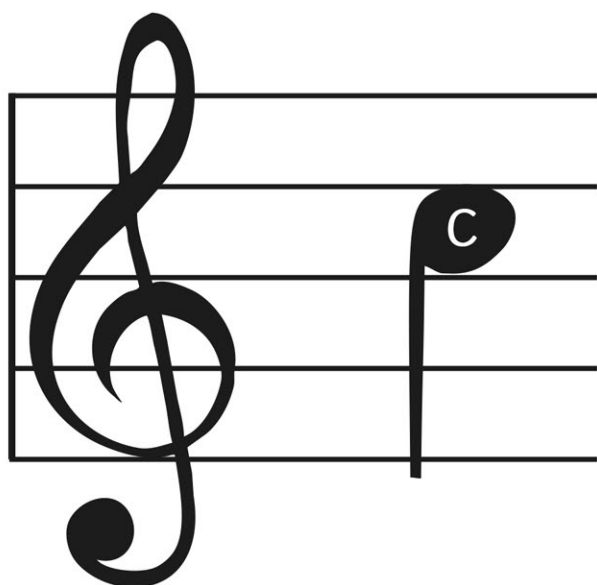
1
2 left hand
3

1
2 right hand
3
4

○ = open hole ● = closed hole ◐ = half open ◑ = a little open

Fingering Chart for Recorders

C



T

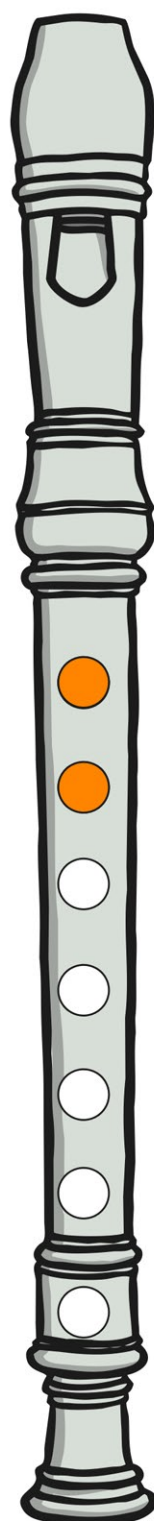
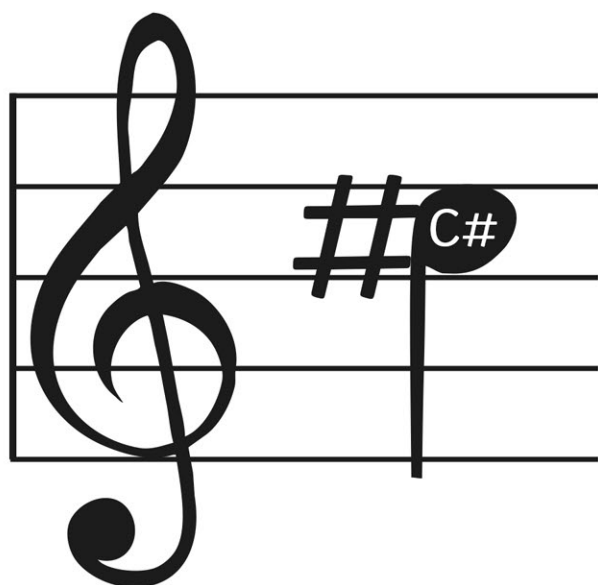
1
2 left hand
3

1
2 right hand
3
4

○ = open hole ● = closed hole ◐ = half open ◑ = a little open

Fingering Chart for Recorders

C#



T

1
2
3

left hand

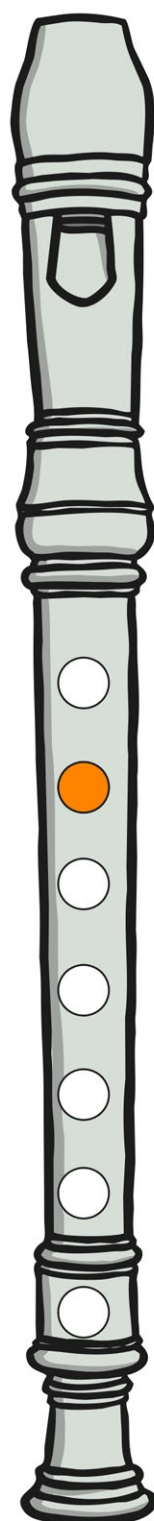
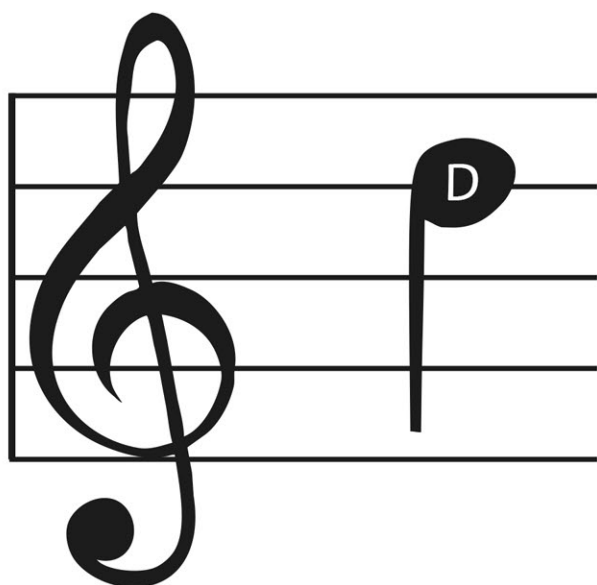
1
2
3
4

right hand

○ = open hole ● = closed hole ◐ = half open ◑ = a little open

Fingering Chart for Recorders

D



T
○

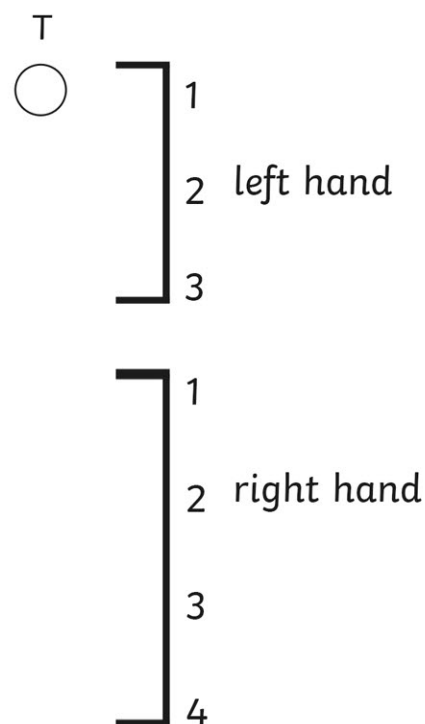
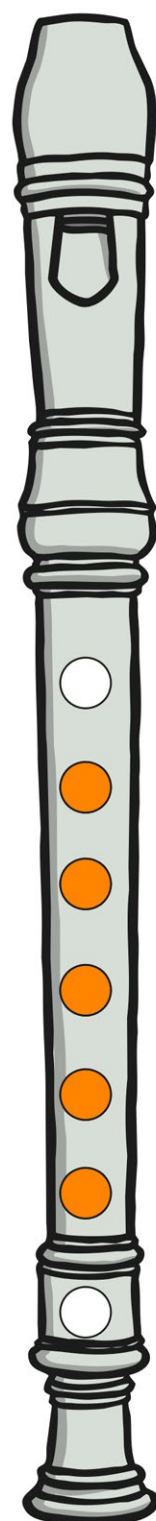
1
2 left hand
3

1
2 right hand
3
4

○ = open hole ● = closed hole ◐ = half open ◑ = a little open

Fingering Chart for Recorders

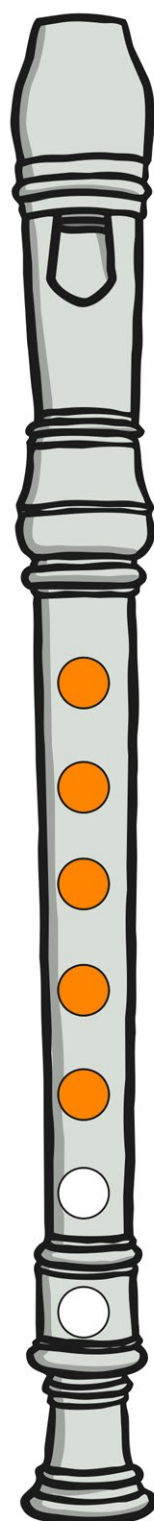
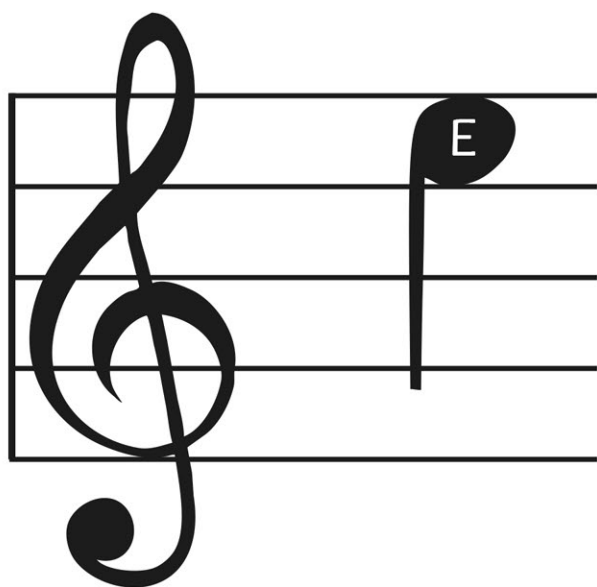
D#



○ = open hole ● = closed hole ◐ = half open ◑ = a little open

Fingering Chart for Recorders

E



T

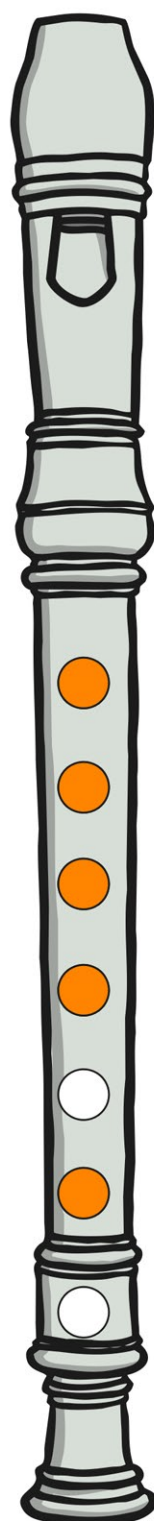
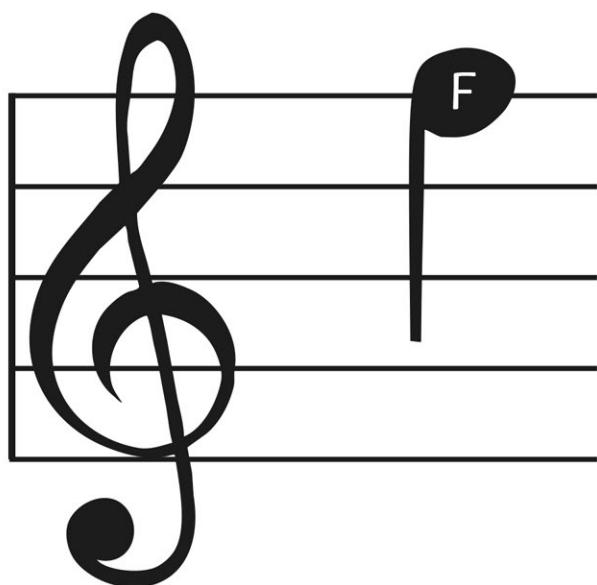
1
2 left hand
3

1
2 right hand
3
4

○ = open hole ● = closed hole ◐ = half open ◑ = a little open

Fingering Chart for Recorders

F



1
2
3

left hand

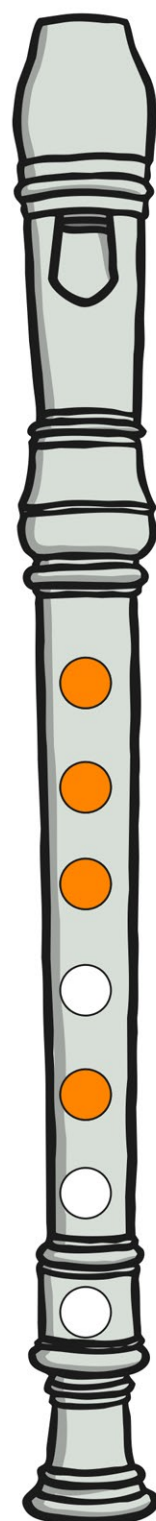
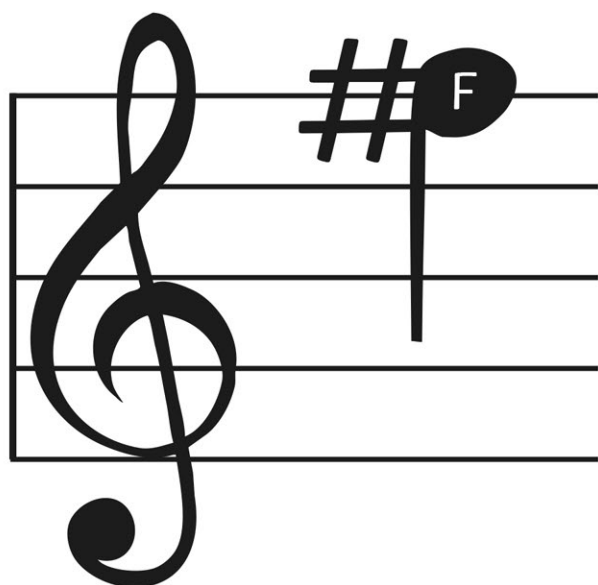
1
2
3
4

right hand

○ = open hole ● = closed hole ◐ = half open ◑ = a little open

Fingering Chart for Recorders

F#



1
2
3

left hand

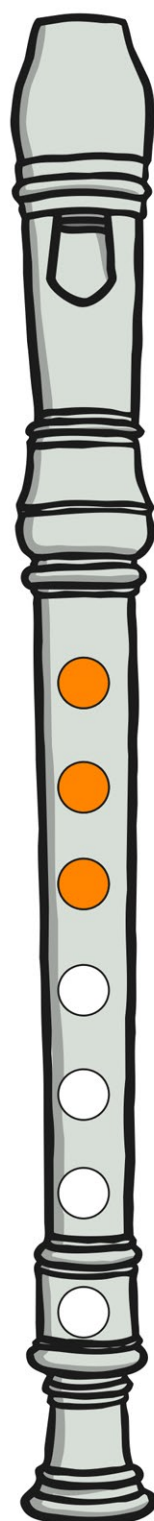
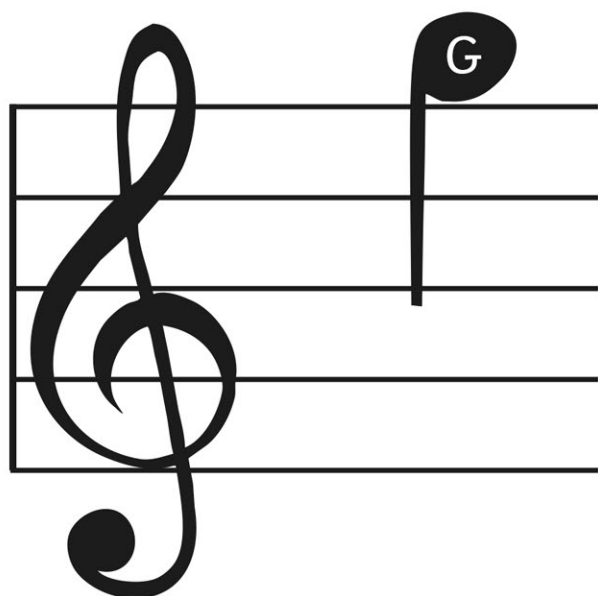
1
2
3
4

right hand

○ = open hole ● = closed hole ◐ = half open ◑ = a little open

Fingering Chart for Recorders

G

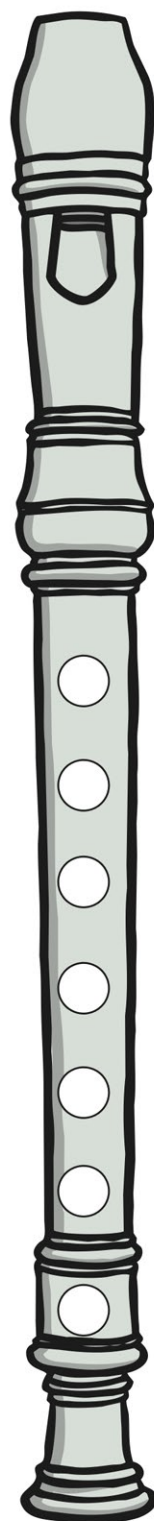
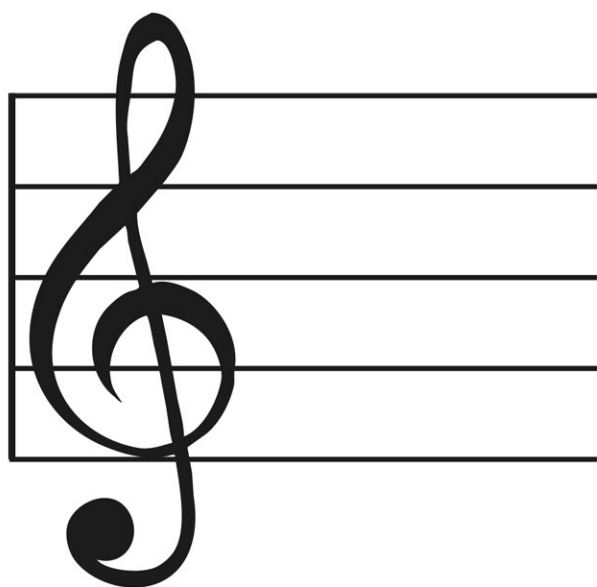


1
2 left hand
3

1
2 right hand
3
4

○ = open hole ● = closed hole ◐ = half open ◑ = a little open

Fingering Chart for Recorders



T
○

1
2 left hand
3

1
2 right hand
3
4

○ = open hole ● = closed hole ◐ = half open ◑ = a little open